

THIS ORGANISER HAS BEEN PRODUCED SPECIALLY FOR THE CANOPY GROUP
ALL THE IMAGES WERE TAKEN IN PANAMA BY DR BILL DIXON

frontpage - VIEW FROM THE CANOPY TOWER TOWARDS PANAMA CITY OVER THE
FOREST



One of the largest Saturnid moths, this species is about six inches long and was imaged at the Canopy Tower. It was chased around the tower basement for several minutes before being successfully imaged.

February

Rothschildia triloba - Saturnidae

1	16
2	17
3	18
4	19
5	20
6	21
7	22
8	23
9	24
10	25
11	26
12	27
13	28
14	(29)
15	

Notes



The Black Howler is a medium size and VERY loud monkey. It is a tropical rainforest species and often comes close to the tower. It often feeds on Cecropia leaves in the vicinity.

March

BLACK HOWLER with baby

1	16
2	17
3	18
4	19
5	20
6	21
7	22
8	23
9	24
10	25
11	26
12	27
13	28
14	29
15	30
Notes	31



The Green Iguana can grow quite large. The small ones are often arboreal as is this one. Large ones can be 4 to 5 feet long and are mostly terrestrial

April

GREEN IGUANA

1	16
2	17
3	18
4	19
5	20
6	21
7	22
8	23
9	24
10	25
11	26
12	27
13	28
14	29
15	30

Notes



Normally found in trees, this one is having a scratch. There are both two and three-toed sloth species found in the Canopy Tower area of Panama.

May

THREE-TOED SLOTH having a scratch

1	16
2	17
3	18
4	19
5	20
6	21
7	22
8	23
9	24
10	25
11	26
12	27
13	28
14	29
15	30
Notes	31

Blank lined area for notes.



One of several bright red Tanagers found in the region - this one coming to feeders at Canopy Lodge

June

Crimson-backed Tanager

1	16
2	17
3	18
4	19
5	20
6	21
7	22
8	23
9	24
10	25
11	26
12	27
13	28
14	29
15	30

Notes



The Common Morpho - Morphos are large and brightly coloured and NEVER rest with their wings open. Thus this is a rare sight

July

rare view of Common Morpho with wings open

1	16
2	17
3	18
4	19
5	20
6	21
7	22
8	23
9	24
10	25
11	26
12	27
13	28
14	29
15	30

Notes

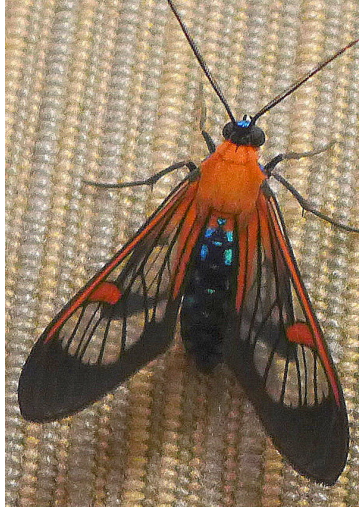


The Hotlips plant, *Psychotria poeppigiana* is a distinctive shrub of the Panama countryside

August

Hot Lips plant

1	16
2	17
3	18
4	19
5	20
6	21
7	22
8	23
9	24
10	25
11	26
12	27
13	28
14	29
15	30
Notes	31



LEFT - one of the Wasp moths of the Tiger moth family

RIGHT - another wasp moth

September

Moths from Panama

1	16
2	17
3	18
4	19
5	20
6	21
7	22
8	23
9	24
10	25
11	26
12	27
13	28
14	29
15	30

Notes



This large member of the Swallowtails is a male, the females have a combination of red and white patches.

October

Emerald-patched Cattleheart

1	16
2	17
3	18
4	19
5	20
6	21
7	22
8	23
9	24
10	25
11	26
12	27
13	28
14	29
15	30
Notes	31



Seen here sucking up water on wet sand, it gets its name from the the pattern on the underwing. There are several species with '88' markings and most have black and red forewings.

November

88 Butterfly

1	16
2	17
3	18
4	19
5	20
6	21
7	22
8	23
9	24
10	25
11	26
12	27
13	28
14	29
15	30

Notes



Panama is famous for its Toucans. This one is commonly called the 'Rainbow Toucan'

December

Rainbow Billed Toucan

1	16
2	17
3	18
4	19
5	20
6	21
7	22
8	23
9	24
10	25
11	26
12	27
13	28
14	29
15	30
Notes	31

Blank lined area for notes.